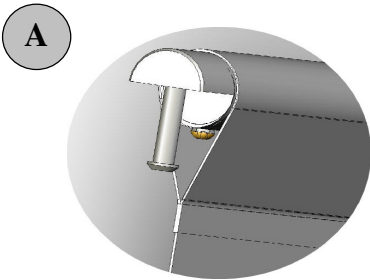
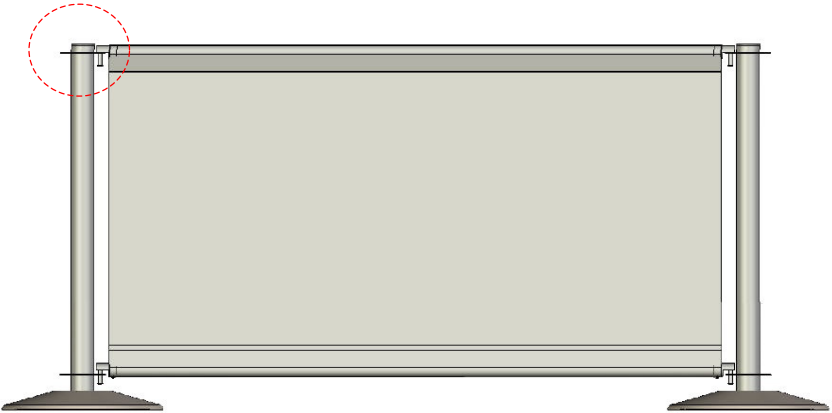


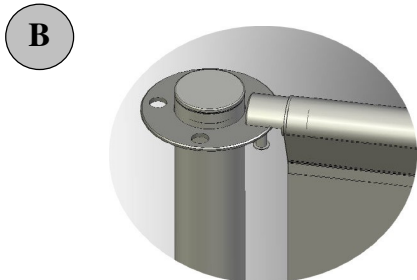
# Café Banner Assembly Guide

## Café Banner Assembly (Stainless Steel version)

Indoor or Outdoor Use



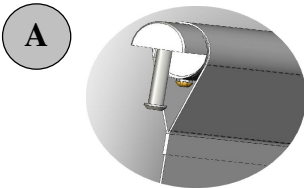
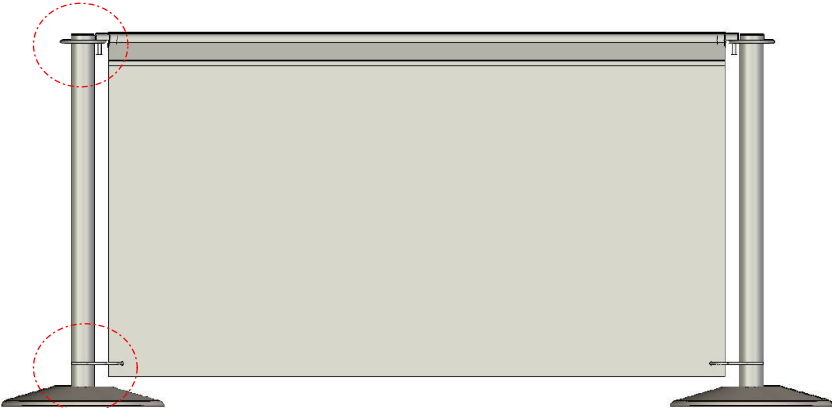
Slide the banner bars through the pockets of the banner.  
(If the pocket depth does not accept the bar end follow steps 1 to 3 as indicated below)



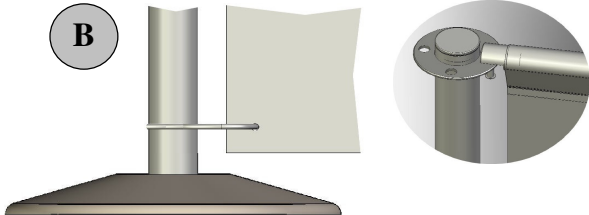
Insert the banner bars onto the posts.

## Café Banner Assembly (Chrome version)

Indoor Use Only

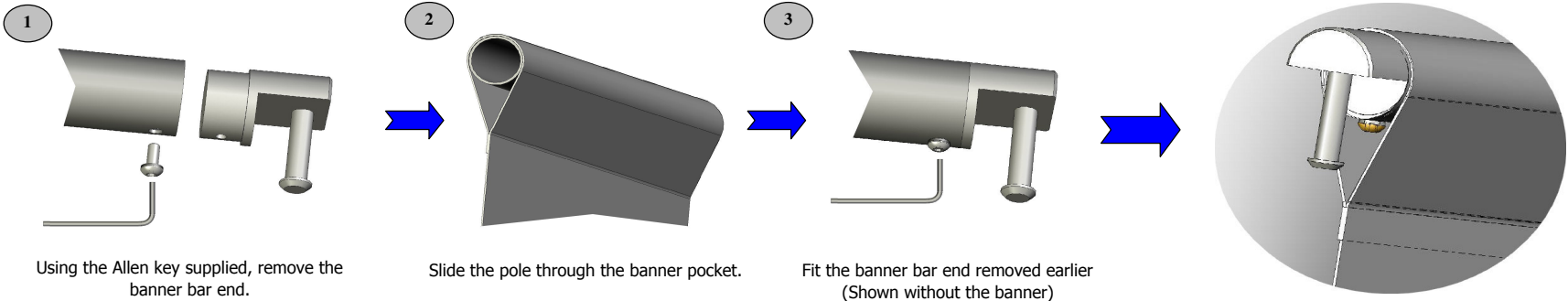


Slide the banner bar through the pocket of the banner.



Slide the bungees over the posts and connect the banner bar. Connect the two bungees to the banner.

## Fitting of the Bar with a shallower banner pocket



Using the Allen key supplied, remove the banner bar end.

Slide the pole through the banner pocket.

Fit the banner bar end removed earlier (Shown without the banner)