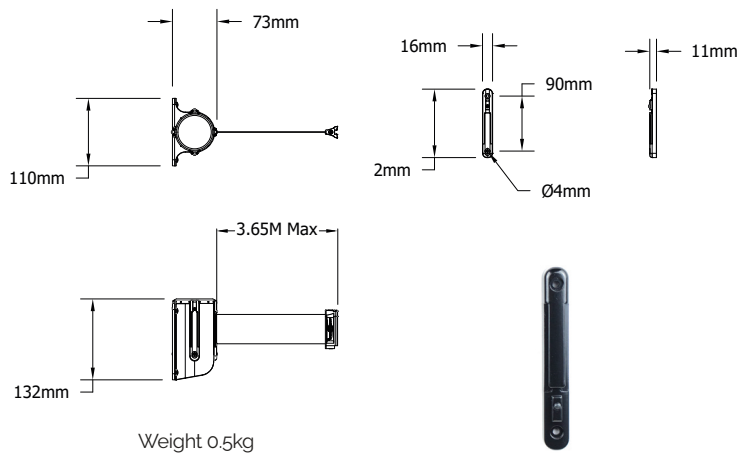
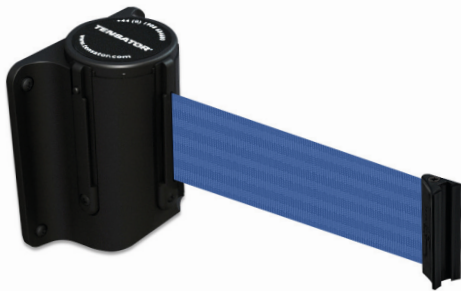
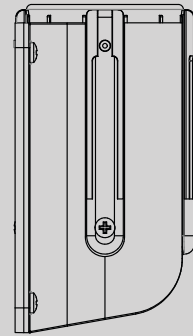


891 Mini

Wall Mounted Unit

Perfect for limiting access to areas without taking up floor space. Features 2.3m or 3.65m of retractable webbing. Ideal for a variety of applications.



Features & Benefits

- Cost effective and stylish, the mini wall unit features a Tensabarrier® cassette which is encased in a black hard wearing plastic body.
- The unit can be easily installed onto a variety of surfaces to suit different applications.
- Safest barrier on the market- our cassettes have a unique braking system for slower webbing retraction.

Product Specification

- Plastic moulded body comes as standard in black.
- Standard screw fix mounting option available.
- A variety of tape end options are available: standard anti-tamper, rubber, panic break, magnetic, one way loop, and wire clip.
- Available with any Tensator® standard (50mm) webbing options.
- Tools only required for mounting the unit to desired surface. Screws are not included as this is dependent on wall type.
- Each unit comes with corresponding wall receiver clip which allows the wall unit webbing to connect to - made from Zinc for its anti-corrosive properties.

Applications

- Eliminate unsafe working conditions by clearly defining routes.
- Restrict access to dangerous areas.
- Limit pedestrian access to out of service areas.
- Use to identify hazards before they cause harm.
- Ideal for a variety of applications.

Order Code

891-STD – Mini Wall Mounted Unit 2.3m

891-MAX – Mini Wall Mounted Unit 3.65m

Product Configuration

Fixing Options



Standard fixing available

Unit Finishes



Black available

Webbing Options



Standard Webbing

50mm width

Webbing Lengths



Two lengths available

Webbing Designs



Full range of colours, designs and custom options

Tape End Options



Six options available

MILTON KEYNES
+44 1908 684 600

NEW YORK
+1-800-441-0019

DUBAI
+971 4 2997 228

PARIS
+33 1 43 09 85 00

FRANKFURT
+49 69 3003 89 010

WROCLAW
+48 71 359 3800